



Blackburn Football Club - Juniors 2019 EFL Football

REGISTRATION INSTRUCTIONS

For BFC Junior Boys / Girls / Women playing in 2019

REGISTRATIONS ARE NOW OPEN for ALL JUNIOR BOYS AND GIRLS playing in 2019.

All returning players and new players **MUST** register and pay club fees using our secure online registration form.

INSTRUCTIONS FOR ONLINE REGISTRATION

STEP 1. CHECK PLAYER STATUS

If you are a player transferring from another football club, you must first complete the [EFL Transfer Form](#) and email it to our registrar at registrar.junior@blackburnfc.com.au (Attention Registrar Suzanne Devers) who will apply for a transfer from your previous club to Blackburn.

The registrar will advise you once the transfer is completed and then you may register online (Step 2 below).

If you are a returning player or a new player to Blackburn who has not played with another club, you may register online immediately (Step 2 below).

NOTE: All New players to Blackburn will need to upload a scanned copy of your Birth Certificate in the online registration process below. Please have this in PDF, JPEG, PNG or GIF file format ready before commencing Step 2 below.

STEP 2. REGISTER YOUR PLAYERS

1. Go to the [SportTG website](#)
2. Set the "Adults" dropdown box to "0", then select the number of children you are registering in the "Children" dropdown box and click 'Continue'.

NOTE: If you are registering more than one player you must register all players at the one time to ensure that you get any sibling discounts that may apply in our fee structure.

3. Enter your email address and follow the prompts.
4. Carefully read and follow the instructions on the screen and enter all the player information as requested.

NOTE: If anything does not make sense or appears incorrect, please contact our registrar at registrar.junior@blackburnfc.com.au (Attention Registrar Suzanne Devers) before proceeding further and we will assist you.

5. Make Payment.

A confirmation email will be sent to you once you have completed your registration/s.

NOTE: If you have any queries or a general enquiry regarding the registration process please send an email to blackburnjnr@efl.org.au (Attention Registrar Suzanne Devers).

REGISTRATION DAY

Sunday 10th February 2019, Morton Park, Central Road, Blackburn, 10am-12noon

We welcome all new and returning players to join us on Registration day. Come and have a kick of the footy and get back into the footy spirit. Please feel free to bring along any new players considering joining Blackburn Football Club.

NOTE: We are NOT accepting paper registration forms anymore. All registrations must be completed online.

All Registrations & Payments received by 5.00pm on Monday 11th February, 2019 will be deemed to have been lodged on time. Registrations received after this time will be deemed to be late with the player placed on a waitlist. This applies to both past and new players.

FEES

BJFC JUNIOR & BFC WOMEN	Club Fee	EFL Insurance Fee	Total Fee Payable
BJFC Eldest player	\$225	\$15	\$240
BJFC Subsequent player	\$195	\$15	\$210
BJFC u10 Girls	\$145	\$15	\$160
BFC Women	\$225	\$22	\$247

SUBSEQUENT CHILD FEES

The subsequent child fee discount applies for every extra sibling

The discount does NOT apply when one or more player/s is playing U19/Senior/Womens Football at Blackburn.

The compulsory EFL Insurance Fee contributes to the funding of operations of the league and provides for the purchase of additional insurance cover of \$1million for playing/training incidents that cause permanent paraplegia or quadriplegia whilst participating for your EFL club. For more information on the extent of the cover provided to players and officials go to www.eflinsurance.com.au. The EFL strongly recommends that individuals consider private health insurance when participating in active sporting environments.

ACCEPTANCE

The Club has established a Playing Policies Manual which contains, among other things, procedures for:

- The order in which registrations will be processed.
- Procedures for dealing with a situation when we may have too many players register in a particular age group.
- Team selection.

Registration is conditional upon receipt of payment, proof of age, EFL acceptance and availability of places.

A copy of the Playing Policies Manual is available on our website: www.blackburnfc.com.au.

2019 EXPECTED AGE GROUP TEAMS

BOYS

Born	Age group	No of teams
2011	U8	2
2010	U9	2
2009	U10	2
2008	U11	2
2007	U12	2
2006	U13	2
2005	U14	2
2004	U15	2
2002-2003	U17	3

GIRLS

Born	Age group	No of teams
2009-2011	U10	1
2007-2008	U12	1
2005-2006	U14	1
2004-2004	U16	1
2001-2002	U18	1
Over 18yrs	Women	1

CORRECT AGE GROUPS

All **players will be registered in their correct age group**. Any player who played in an older age group in 2018 will only be allowed to play up in 2018 where exceptional circumstances exist and at the invitation of the Executive Committee.

POLICIES

The Blackburn Football Club seeks to provide an opportunity for the youth of Blackburn and the surrounding suburbs to play football in a safe and enjoyable environment. This is achieved by promoting:

- the development of our players to the best of their abilities,
- fairness and equal opportunity for all players,
- respect for officials, team-mates, opponents and supporters,
- player safety, and
- community spirit.

The Club has developed a set of policies that are designed to reinforce these values and ensure that the Club continues to develop as one of the best clubs in the Eastern Football League:

- Behaviour Policy
- Player Registration Policy
- Financial Policy
- Player Development Policy
- Team Size and Selection Policy
- Game time Policy
- Captains Policy
- Awards and milestones Policy
- Player Safety Policy
- Smoking and alcohol Policy
- Coaching Policy
- Child Safe Policy

A copy of these policies are available on our website: www.blackburnfc.com.au.

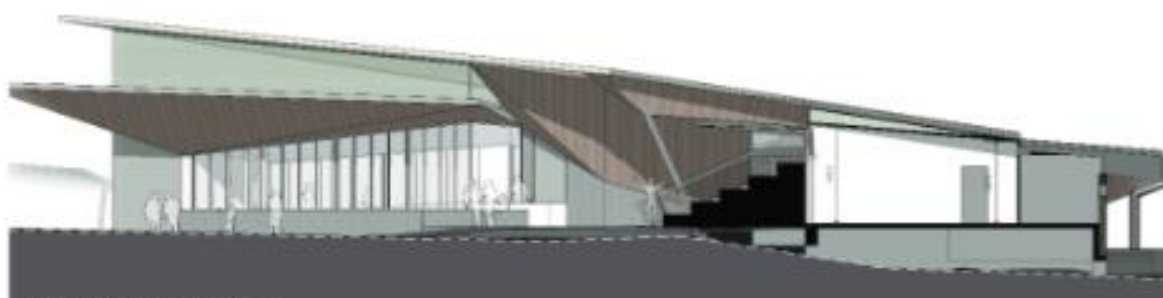
It is suggested that you review these policies prior to registering online with the Blackburn Football Club as parents and players are deemed to *abide by the Club's Policies and EFL's Code of Conduct*.

MEDICAL TREATMENT

Accidents happen from time to time in football as in any sport. In registering with the Blackburn Football Club a player's parents must complete the online **Athlete Medical Profile within the registration document**.

Upon registration, all players are covered by the [EFL's Insurance scheme](#) which provides limited medical insurance. However, this may not necessarily cover all costs and hence the Club recommends that families consider whether private health insurance may be warranted.

We look forward to seeing you all on Registration Day but please register immediately to secure your place for the 2019 season!



WE ARE
BLACKBURN